

调速控制器

单相电子调速器，采用PD比例调节器，电流负反馈技术，优质的电子元件。具有运转平稳、起动迅速、调速范围宽、控制精度高、寿命长、耗能低等特点，可实现恒力矩无极调速。调速器供电采用隔离电源，可与微机连接，实行远程调速控制。

主要技术参数

输出功率: ≤250w

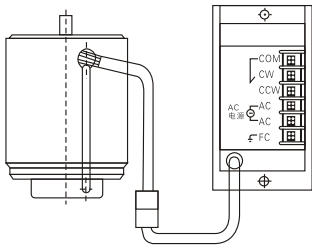
电流:5A

电源电压:220±10%V/50Hz

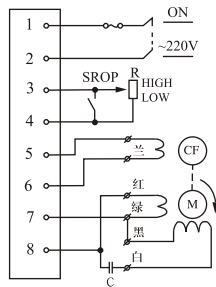
工作环境: 温度-10℃~+50℃

接线说明

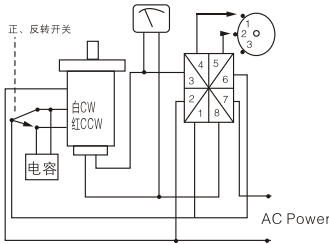
US正反转调速
US Normal/Reversible speed control
(Line Knotting Chart)



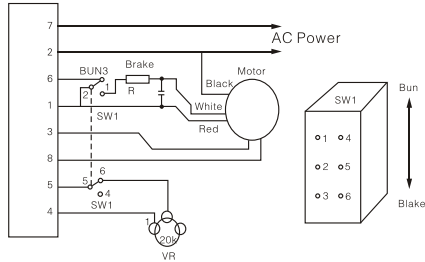
FS32
单方向运转: Single direction



SS正.反转+控速 (接线图)
SS Normal/Reversible+speed control
(Line Knotting Char)

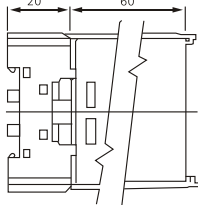
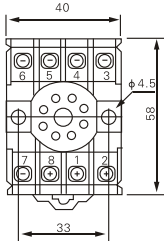


SS控速+制动 (电子刹车)
SS speed control+brake
(w/electronic brade)

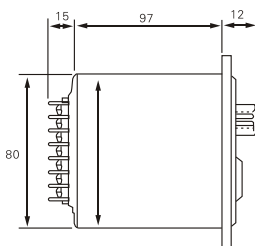


安装尺寸

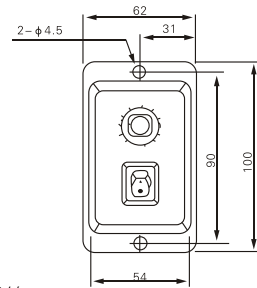
SS-22分离型Separate Type



SS分离控制箱



US控制箱



马达接线图: Wiring diagram

IK型感应马达: INDUCTOU MOTOR

RK型可逆马达: REVERSIBE MOTOR

