



1.5KW

CV型立式三相铝壳(刹车)马达减速机

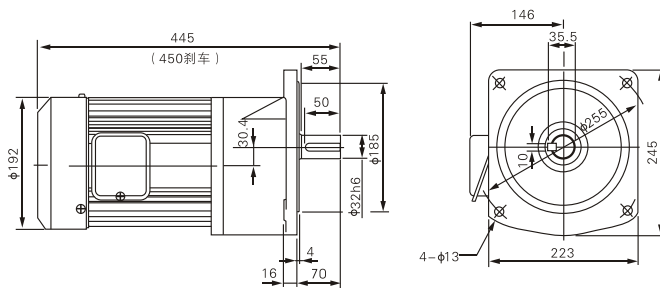
CV. RTICAL TYPE WITH ALUMINOM PLATE 3PHASE (BRAKE) GEAR MOTOR

马达尺寸图 Dimensions chart

单位: mm

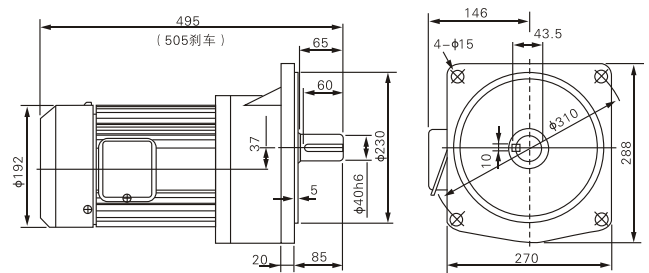
CV-32-1500-3~30

轻负载缩框型CV-32-1500-40~100

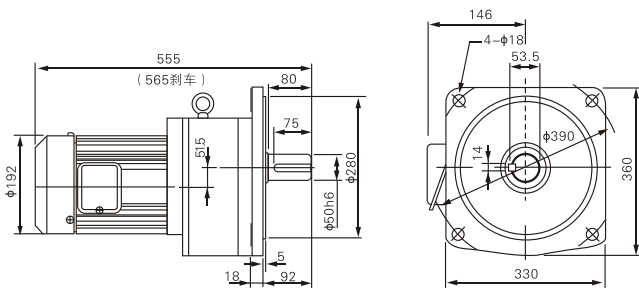


CV-40-1500-35~100

轻负载缩框型CV-40-1500-110~200



CV-50-1500-110~200



注: 缩框型为轻负载, 无大惯性场合中使用。为不正当设计, 如非必要请勿使用。